



Image may depict upgrades that are not included in the pricing.

Floor area: 278.30m<sup>2</sup> Land Area: 511m<sup>2</sup>  
Address: 10 Bushy Road YAMBA NSW 2464



## Ready to build now!

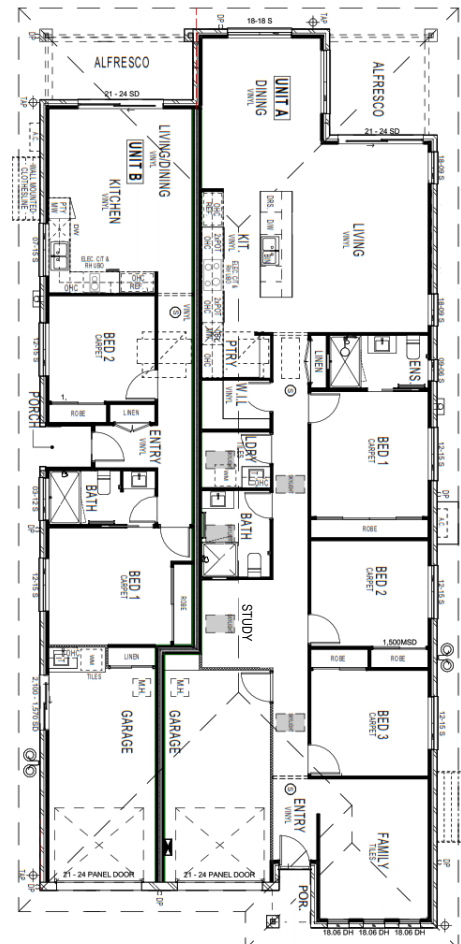
Dont miss this!

Turn-key and guaranteed 26 week build.

Built to a luxury standard, this dual living home is perfect for the investor, astute buyer who requires an extra income or multi-generational family.

**Built to Perry Homes' exacting standards, this price includes:**

- Prestige Facade
- 2590mm ceiling height throuhout
- Full height tiling to the bath and ensuite to Unit A
- Fully ducted reverse cycle air-conditioning to both units
- Skylights throughout Unit A
- Colorbond Roof
- 20mm Quatum stone benchtops throughout
- Built-in robes with mirrored sliding doors
- Semi-frameless shower screens, upgraded tapware & basins
- Exhaust fans ducted externally to wet areas
- Upgraded range of internal doors
- Upgraded range of entry doors
- Main flooring throughout
- Flyscreens
- Designer plain concrete driveway and path to Unit B
- Exterior grade tiled porches and alfrescos
- Fully landscaped
- Colorbond fencing including side gates and unit rear division
- Clotheslines and letterboxes



Contact for more information now.

**Michaela Burt 0417 006 710**  
[michaela.burt@perryhomes.com.au](mailto:michaela.burt@perryhomes.com.au)

"Disclaimer: Due care has been taken with the siting, design and pricing of the proposed dwelling based upon current information and is correct at time of publication. This however, may change as a result of other influences such as; developer covenants, local, state or federal government requirements etc. Also, undetermined site conditions such as; tree removal, acoustics, bushfire, rock etc. may be excluded unless otherwise specified. Terms and conditions apply to campaigns and special offers. Plans and images are for illustrative purposes only and may depict features such as landscaping, furniture, window furnishings and lighting that are not included in the package price or which are not available from Perry Homes. Land price is correct at time of printing and subject to change without notice. \*Price freeze does not apply to land prices, Please refer to your local sales consultant for promotion validity and price freeze terms and conditions. Perry Homes reserve the right to withdraw this package at any time without notice. Perry Homes (Aust) Pty Ltd. QBCC Act Lic. No.718748 NSW Lic No. 110970C."