



Image may depict upgrades that are not included in the pricing.

**Inspired Collections**

Over 100 additional items included

**DREAM HOME DEAL...  
UP TO \$60,000 OF UPGRADES  
INCLUDING DUCTED AIR  
CONDITIONING FOR ONLY \$6,990**

Floor area: 224.58m<sup>2</sup> / 24.17sq | Block Size: 604m<sup>2</sup>  
Address: Lot 122, 1 Luxor Street, Chisholm



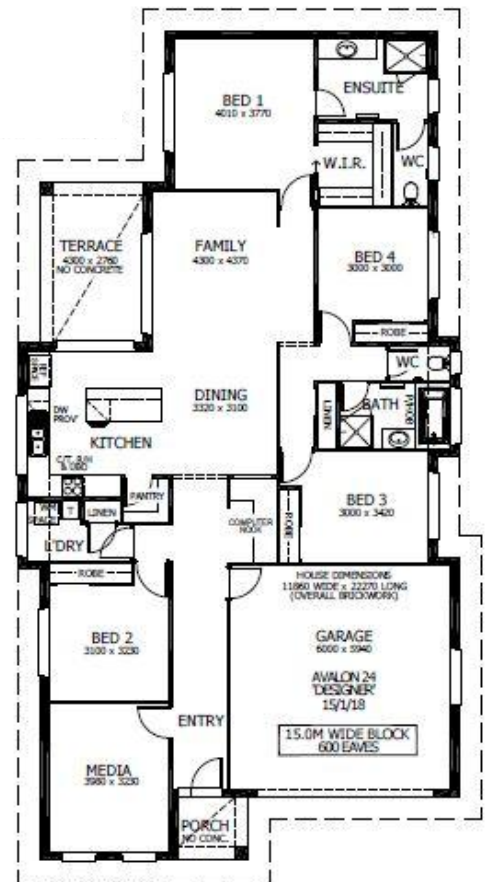
## Avalon 24 Package Inclusions

- \* DREAM HOME DEAL
- \* 26 WEEK BUILD TIME GUARANTEE
- \* 12 MONTH FIXED PRICE CONTRACT
- \* LAND IS REGISTERED
- \* Designer Plus Portico
- \* Open Plan Living
- \* Sustainability Collection
- \* Perry Homes 'Standard Inclusions'
- \* Fully Ducted Air Conditioning (Incl. in promotion)
- \* 'Inspired By You' upgrades (Incl. in promotion)
- \* Anticon Blanket roof insulation
- \* All internal floor coverings
- \* Flyscreens to all windows and sliding doors
- \* Wall mounted clothesline
- \* TV antenna and Letterbox
- \* Concrete allowance to driveway, porch & terrace
- \* 2590mm ceiling height
- \* Site Works and BASIX allowance including Council lodgement *(subject to Contour Survey)*



CHISHOLM

**McFarlanes  
Rise**



**Noel Simmonds**  
0418 169 800

[noel.simmonds@perryhomes.com.au](mailto:noel.simmonds@perryhomes.com.au)  
[www.hunterregionhouseandland.com.au](http://www.hunterregionhouseandland.com.au)

**Vicki Schroeder**  
02 4077 3833

[vicki.schroeder@perryhomes.com.au](mailto:vicki.schroeder@perryhomes.com.au)  
[www.hunterregionhouseandland.com.au](http://www.hunterregionhouseandland.com.au)

**hunter**  
region house & land

"Disclaimer: Due care has been taken with the siting, design and pricing of the proposed dwelling based upon current information and is correct at time of publication. This however, may change as a result of other influences such as; developer covenants, local, state or federal government requirements etc. Also, undetermined site conditions such as; tree removal, acoustics, bushfire, rock etc. may be excluded unless otherwise specified. Terms and conditions apply to campaigns and special offers. Plans and images are for illustrative purposes only and may depict features such as landscaping, furniture, window furnishings and lighting that are not included in the package price or which are not available from Perry Homes. Land price is correct at time of printing and subject to change without notice. Perry Homes reserve the right to withdraw this package at any time without notice. Perry Homes (Aust) Pty Ltd. QBCC Act Lic. No.718748 NSW Lic No. 110970C."