



Image may depict upgrades that are not included in the pricing

4  3  2 

House size: 290.72m² Land size: 2604m²

Carrington 31 Designer

*The Carrington 31 is on display at 3 Silverwisp Road, Chisholm

Lot 5 Earl Park Court, Kitchener

The Carrington is one of the latest designs to be included in the Perry Homes portfolio. This design is the epitome of modern living with the inclusion of a fully self-contained abode. Perfect as a teenager's retreat, guest suite or an integrated granny flat, it features a separate entrance and outdoor area, to further enhance the appeal of this stylish design.

In addition to this, there are three other family friendly living zones, offering versatility and functionality. Blending space and style, these living rooms flow seamlessly to the undercover outdoor living area. At the centre to this, is the modern kitchen showcasing stylish features including a butler's walk-in pantry and generous breakfast bar.

The refined parents retreat, offers privacy to enjoy the spacious master bedroom with a large picture window and walk-in robes. The ensuite with freestanding bath and seamless shower, offers the perfect ambience of sophisticated luxury. The other bedrooms are positioned around the family bathroom, laundry and an activity zone which can be utilised as a children's play room or study area.

The Carrington offers an unsurpassed living environment, with features that will suit the varying and changes needs of contemporary family life.

\$627,340

House price: \$354,440 Land price: \$272,900

FEATURES

- Site Costs & BASIX allowance included
- Upgraded Designer Kitchen with stainless steel appliances
- Current Promotion included
- All internal floor coverings
- Westinghouse 900mm dual fuel freestanding cooker & canopy range hood
- Coloured concrete to porch & Terrace
- Brick Letterbox, TV Antenna
- Wall mounted clothesline
- Perry Homes 'Standard Inclusions Package'
- Flyscreens to all windows & sliding doors
- Allowance for late registration
- Plus much more.....

Carrington 31 – Designer

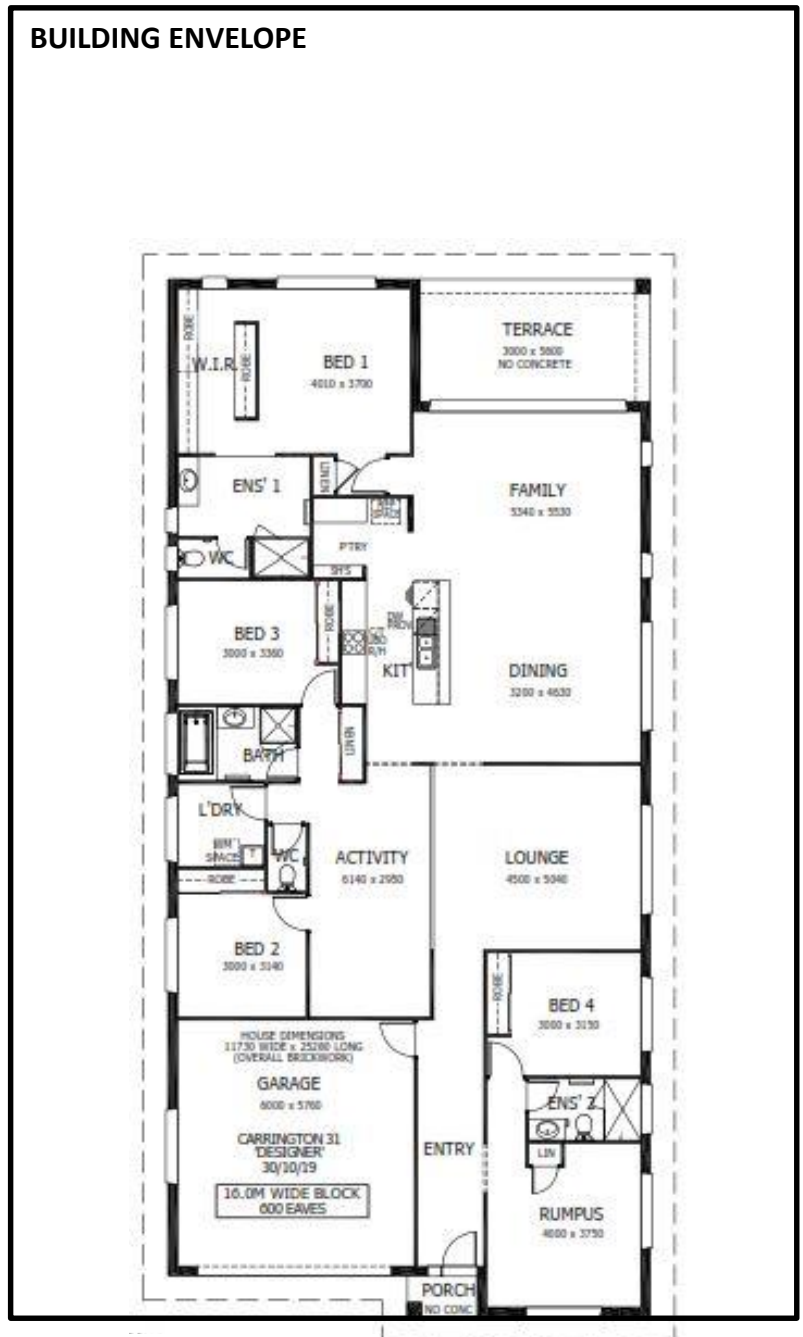
Lot 5 Earl Park Court, Kitchener

Land 2604m²
 Building Envelope Frontage 20m
 Building Envelope Depth 30m

House

Living 234.90m²
 Porch 1.70m²
 Terrace 16.86m²
 Garage 37.32m²

Total 290.72m²



Noel Simmonds

0418 169 800

noel.simmonds@perryhomes.com.au

www.hunterregionhouseandland.com.au



0487 000 970

EarlPark.com.au