



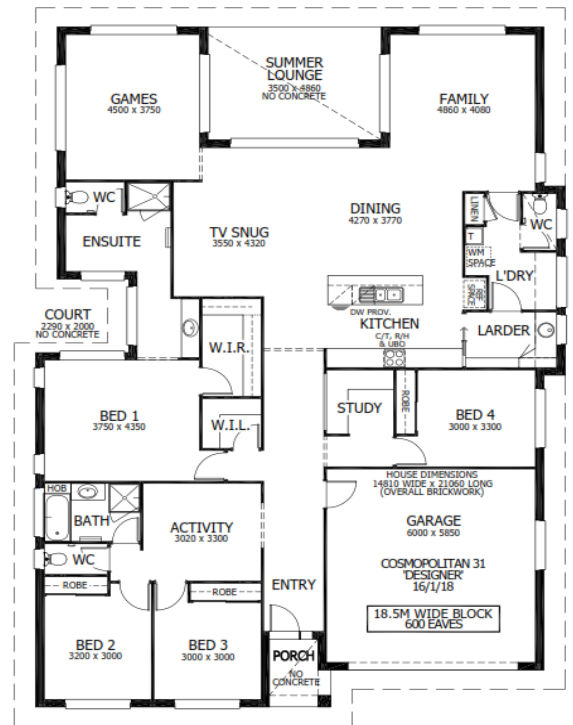
Image may depict upgrades that are not included in the pricing.

Floor area: 285.35m² / 30.72sq | Block size: 1514m²
 Address: Lot 327 Ossa Street, Louth Park



Cosmopolitan 31 Package Inclusions

- * Prestige Facade with Designer Plus Portico
- * Upgraded Designer Kitchen with Stainless Steel appliances
- * Westinghouse dual freestanding cooker & canopy range hood
- * 'Reconstituted' stone benchtops to Kitchen
- * LED downlights throughout
- * Fully Ducted Air Conditioning
- * Floor coverings throughout.
- * Flyscreens to all windows and sliding doors.
- * Wall mounted clothesline
- * Powder coated metal letterbox
- * TV antenna.
- * Concrete Allowance to Driveway, Porch & Summer Lounge
- * Site Cost allowance including Council Approval (subject to Contour Survey)
- * Allowance included for late registration date



Lisa Simmonds-Webb
 0458 169 805
 lisa.simmondswebb@perryhomes.com.au
 www.hunterregionhouseandland.com.au

Ben Hancock
 0435 956 546
 ben.hancock@perryhomes.com.au
 www.hunterregionhouseandland.com.au