



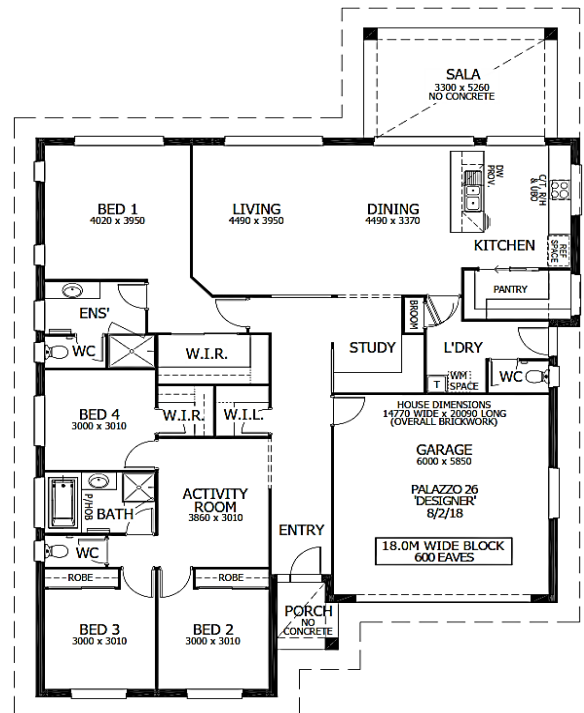
Image may depict upgrades that are not included in the pricing.

Floor area: 239.39m² / 25.77sq | Block size: 4736m²
 Address: 24 Frogmouth Drive Gulmarrad 2463



Palazzo 26 Package Inclusions

- * Site cost allowance including Council approval
- * R3 ceiling insulation to living areas
- * Off white mortar
- * LED downlights throughout
- * Instantaneous gas (LPG) hot water system
- * Remote control unit to garage incl. three (3) handsets
- * Provision for future fibre optic system
- * Westinghouse cooktop and oven
- * Laminated soft close doors to kitchen and vanities
- * Compliance with BASIX water tank requirements (NSW only)
- * Kitchen upgrade: Laminated overhead cupboards with plaster board bulkheads to ceiling, dishwasher provision, integrated range hood ducted externally
- * Floor coverings throughout.
- * Flyscreens to all windows and sliding doors.
- * Powder coated wall mounted clothesline and metal letterbox.
- * TV antenna.
- * Your choice of exposed aggregate or coloured concrete to driveway, porch and rear covered area.
- * Turf allowance 250m²
- * 7.5m² of landscaping to front yard
- * Fencing allowance \$2500



Michaela Burt 0417 006 710
 michaela.burt@perryhomes.com.au