



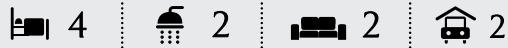
Terrace



Perry Homes

Indicative Artist Impression

Terrace 27



DESIGNER

Width: 15.47m

Depth: 20.80m

Area Sizes

Living Total	194.17m ²
Garage	38.51m ²
Porch	1.65m ²
Terrace	13.14m ²

Total Area

247.47m² / 26.64sq

DESIGNER PLUS

Width: 16.07m

Depth: 21.40m

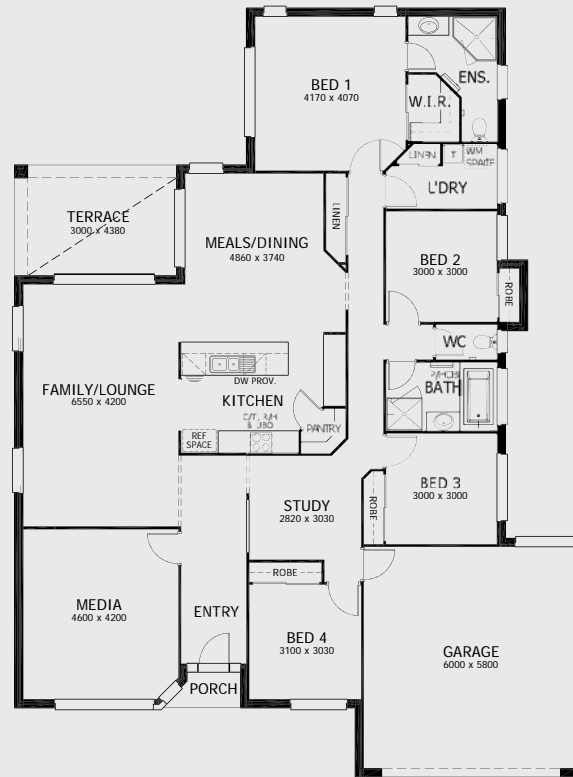
Area Sizes

Living Total	197.76m ²
Garage	38.50m ²
Portico	6.12m ²
Terrace	13.14m ²

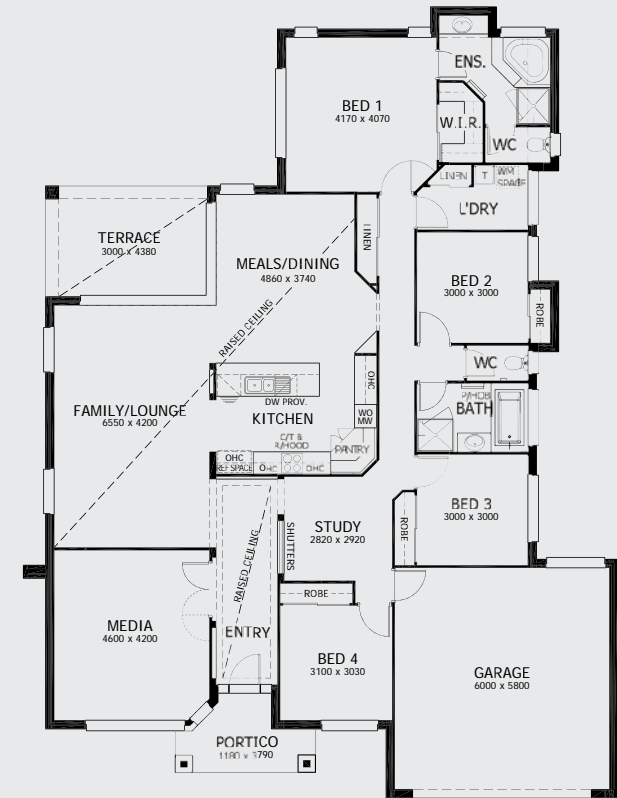
Total Area

255.52m² / 27.50sq

DESIGNER - 247.47m² / 26.64sq



DESIGNER PLUS - 255.52m² / 27.50sq



Perry Homes

Quality homes. Exceptional value.



Perry Homes (Aust.) Pty Ltd, 49 Minjungbal Drive, Tweed Heads South, NSW 2486

Phone: (07) 5569 9400 Fax: (07) 5523 2884 perryhomes.com.au



Images, plans and dimensions in this brochure, do not necessarily accurately depict the finished product as on display. Some images may show features which are not supplied by Perry Homes, or outside our standard range, but have been used for display purposes only. Plans, prices and inclusions are subject to variation without notice. Dimensions are approximate only. For more details please consult with your sales consultant. The copyright on all floor plans is owned by Perry Homes (Aust.) Pty Ltd. These floor plans may not be reproduced, copied or dealt with in any manner which infringes the exclusive rights of Perry Homes (Aust.) Pty Ltd. as prescribed by the Copyright Act 1968 without the express written authorisation of Perry Homes (Aust.) Pty Ltd. © Perry Homes (Aust.) Pty Ltd ABN 53 090 866 630. QBCC Act Lic. No. 718748. NSW Lic. No. 110970C. April 2018. E27938