



Courtyard



Perry Homes

Indicative Artist Impression

Courtyard 21



3 bedrooms, 2 bathrooms, 2 living areas, 2 car spaces

DESIGNER PLUS

Width: 11.09m Depth: 22.30m

Area Sizes

Living Total 146.13m²
 Garage 37.71m²
 Terrace 10.41m²

Total Area 194.25m² / 20.91sq

DESIGNER

Width: 11.09m Depth: 23.89m

Area Sizes

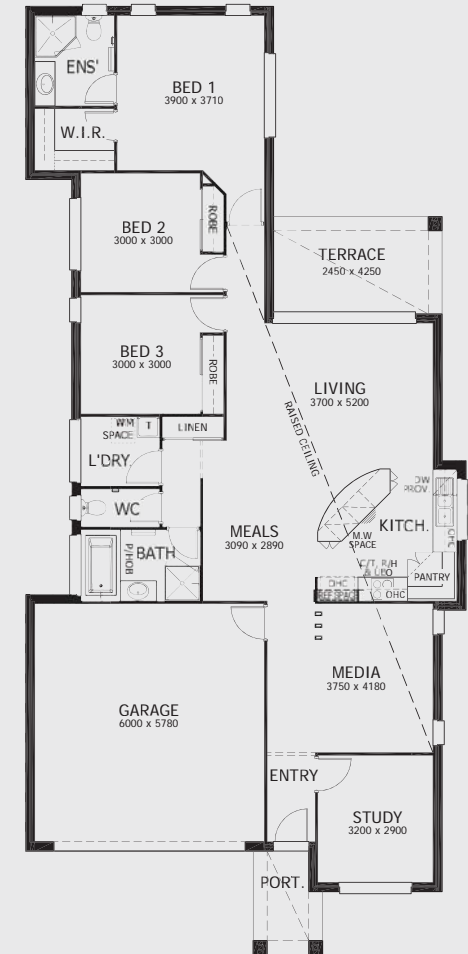
Living Total 146.13m²
 Garage 37.71m²
 Portico 4.21m²
 Terrace 10.41m²

Total Area 198.46m² / 21.36sq

DESIGNER - 194.25m² / 20.91sq



DESIGNER PLUS - 198.46m² / 21.36sq



Perry Homes
 Quality homes. Exceptional value.



Perry Homes (Aust.) Pty Ltd, 49 Minjungbal Drive, Tweed Heads South, NSW 2486

Phone: (07) 5569 9400 Fax: (07) 5523 2884 perryhomes.com.au



Images, plans and dimensions in this brochure, do not necessarily accurately depict the finished product as on display. Some images may show features which are not supplied by Perry Homes, or outside our standard range, but have been used for display purposes only. Plans, prices and inclusions are subject to variation without notice. Dimensions are approximate only. For more details please consult with your sales consultant. The copyright on all floor plans is owned by Perry Homes (Aust.) Pty Ltd. These floor plans may not be reproduced, copied or dealt with in any manner which infringes the exclusive rights of Perry Homes (Aust.) Pty Ltd. as prescribed by the Copyright Act 1968 without the express written authorisation of Perry Homes (Aust.) Pty Ltd. © Perry Homes (Aust.) Pty Ltd ABN 53 090 866 630. QBCC Act Lic. No. 718748. NSW Lic. No. 110970C. April 2018. E27938